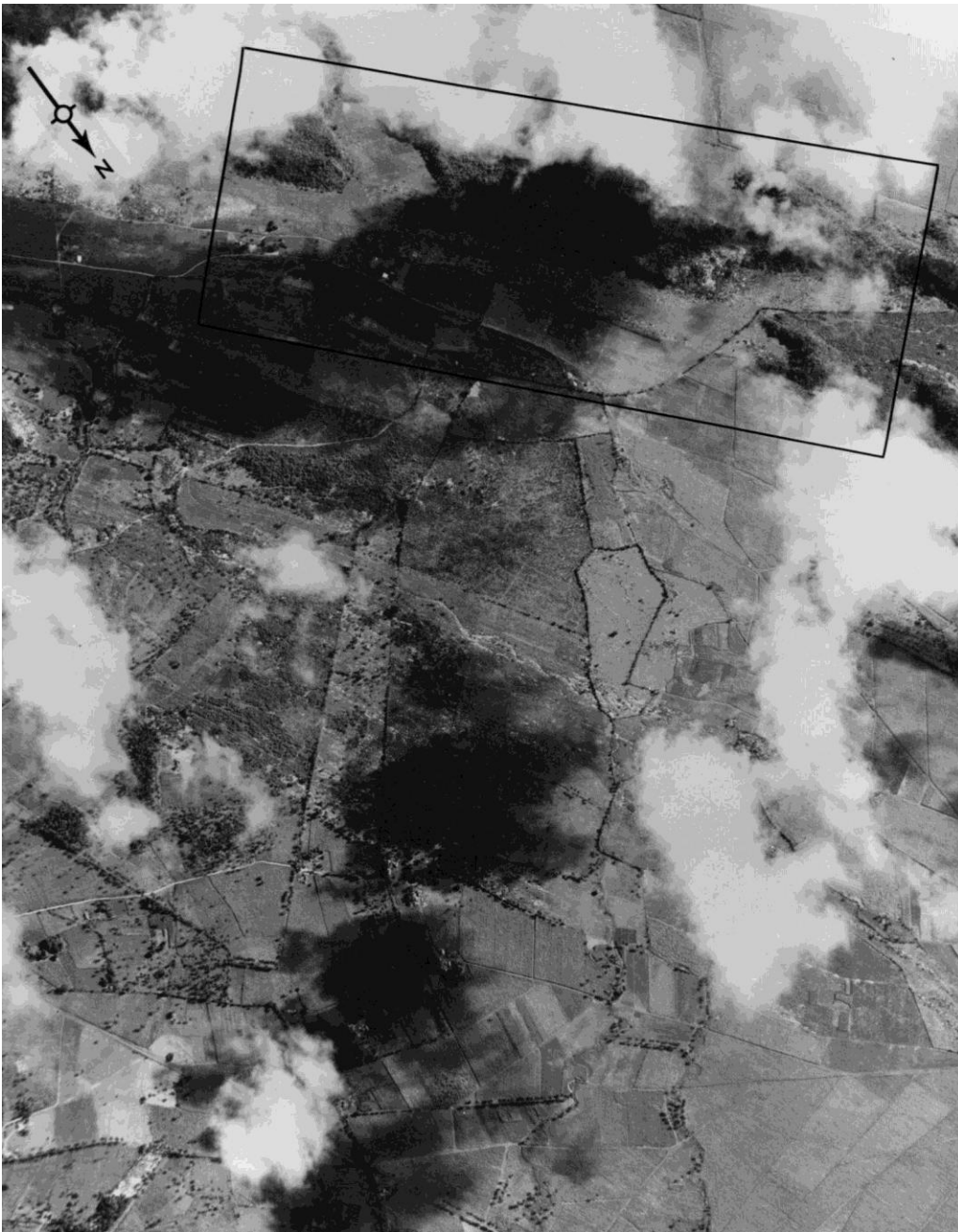
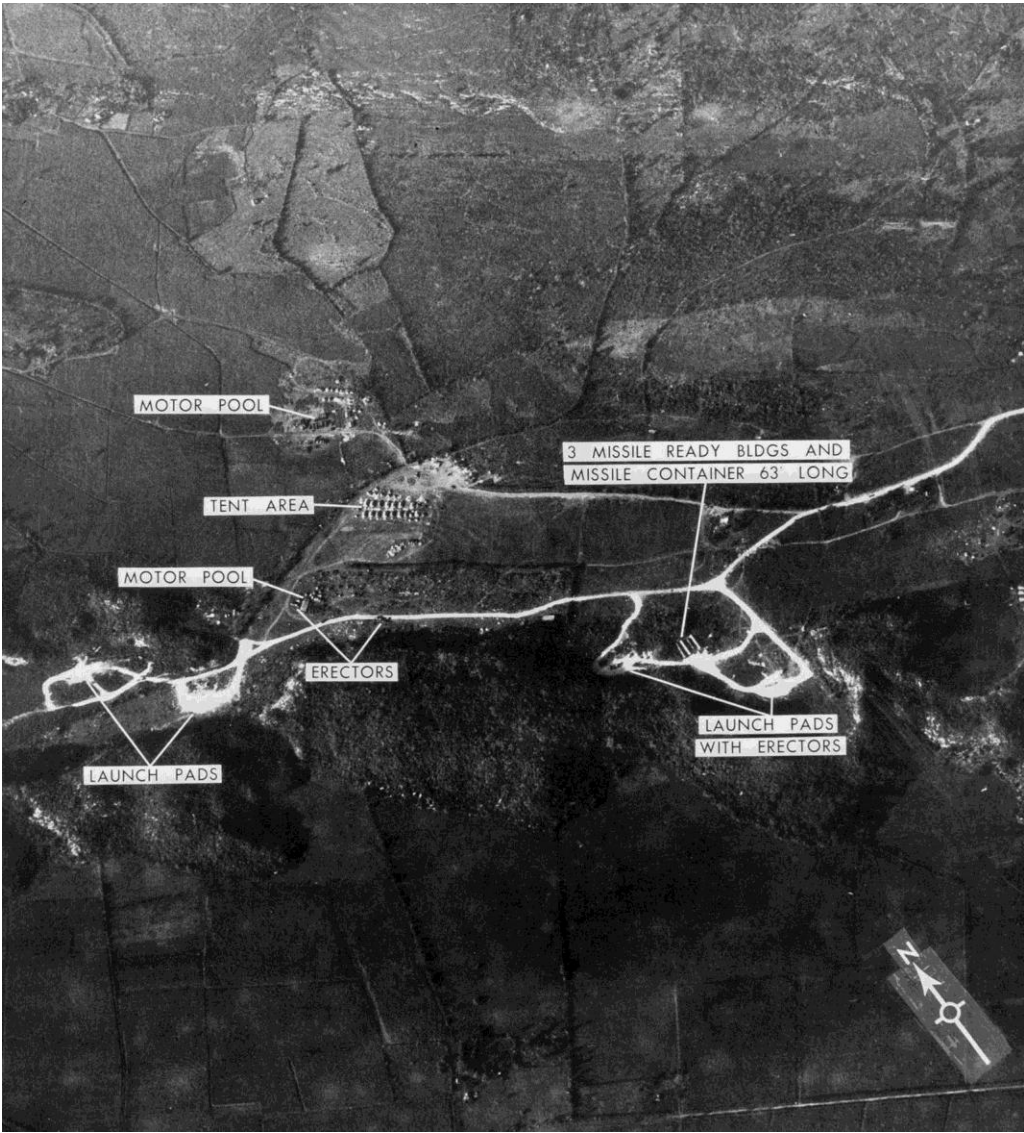


# Reconnaissance Photo Analysis





MOTOR POOL

3 MISSILE READY BLDGS AND  
MISSILE CONTAINER 63 LONG

TENT AREA

MOTOR POOL

ERECTORS

LAUNCH PADS

LAUNCH PADS  
WITH ERECTORS



Photo Analysis

Names: \_\_\_\_\_

Date: \_\_\_\_\_ Period: \_\_\_\_\_

1) What did you see in the photos? \_\_\_\_\_

\_\_\_\_\_

2) How are the photos similar? How are they different? \_\_\_\_\_

\_\_\_\_\_

3) How have the photos changed over time? \_\_\_\_\_

\_\_\_\_\_

4) In your opinion, do you consider this a threat to United States national security? Why or why not? \_\_\_\_\_

\_\_\_\_\_

5) What actions do you think President Kennedy should take? \_\_\_\_\_

\_\_\_\_\_

6) By taking this course of action, what might happen? \_\_\_\_\_

\_\_\_\_\_

7) Why do you think President Kennedy and his advisors might try to avoid any sort of confrontation? \_\_\_\_\_

\_\_\_\_\_

Thoughts for consideration:

Does Cuba have a right to assemble nuclear missiles? Should the United States dictate who can/cannot assemble missiles?